

# WHY THINGS ARE CHANGING...

Recycling in Ontario is changing due to updates to the Resource Recovery and Circular Economy Act, which introduced new rules about who is responsible for collecting and processing different types of materials. Under the updated regulations, Producer Responsibility Organizations (PROs) are now only responsible for managing residential recycling.

As a result, recycling from businesses, institutions, and other non-residential properties (known as **ICI: Industrial, Commercial, and Institutional**) must now be collected separately. To meet these requirements and ensure proper sorting, we've introduced dedicated collection routes using separate trucks for ICI properties.



HELP US  
STAY IN  
TOUCH!



Scan the QR code to ensure you receive important updates—such as changes to your collection schedule, service details, or future costing information. Providing a primary contact for your business will help us to communicate directly and keep your recycling service running smoothly.



QUESTIONS OR  
CONCERNS?  
REACH OUT!



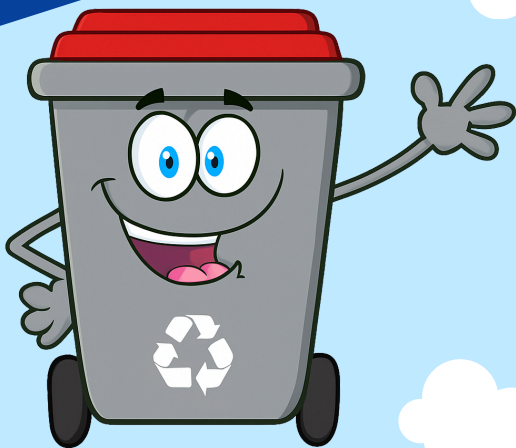
1.800.265.9799  
info@bra.org



# CHANGES ARE COMING TO COMMERCIAL RECYCLING

Here's everything you need to know...

www.bra.org





## WHAT'S CHANGING...

### COLLECTION DAY & FREQUENCY

**Starting January 2026**, your recycling collection day, frequency, and time may change. Please ensure bins are curbside by 7am for collection. You can continue to use your bins as normal on your regular collection day until then.

**Your waste collection day remains unchanged.**

### Your New Recycling Collection:

Collection Day:

Frequency:

First Collection:

Scan the QR code to download a schedule calendar.



### BIN LIDS

As we prepare for our January launch, bins at ICI properties will be updated with red lids. These bins are for commercial-source recyclables only.

*If you have received this notice and your lid has not been updated, please contact us at: 519-228-6678 x243*

## OUR COMMITMENT

**While the way we manage ICI (Industrial, Commercial, and Institutional) recycling is evolving, one thing isn't changing: our commitment to you. You can continue to count on the prompt, friendly, and reliable service you've always received. We're here to make this transition as smooth as possible and will continue to support your business every step of the way.**

## FREQUENTLY ASKED QUESTIONS

### WILL THE ACCEPTABLE ITEMS CHANGE?

No. While some changes are being made to the list of acceptable materials for residential properties, ICI properties will continue to follow the current list of accepted items. This means you can continue recycling the same materials you do now.

### WILL MY WASTE COLLECTION CHANGE?

No, waste collection will remain the same. Only recycling is being affected. This could mean your recycling and waste collection are now on separate days.

### WHAT IF WE SHARE THE BIN WITH A RESIDENCE?

As of January 2026, all residential and commercial recycled material must be kept separate. Please reach out to us and we can give you a separate bin for residential material.

### CAN I CHANGE TO A RECYCLING DUMPSTER?

Yes. For options and pricing, please contact Mars Environmental, our commercial division:  
1-800-642-BINS  
marsenvironmental.ca